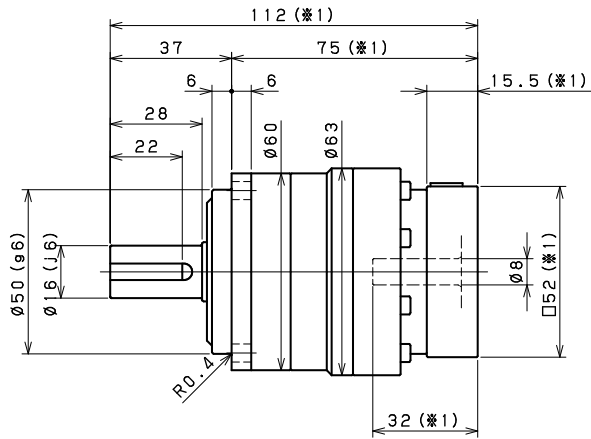
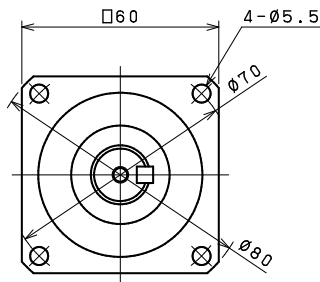
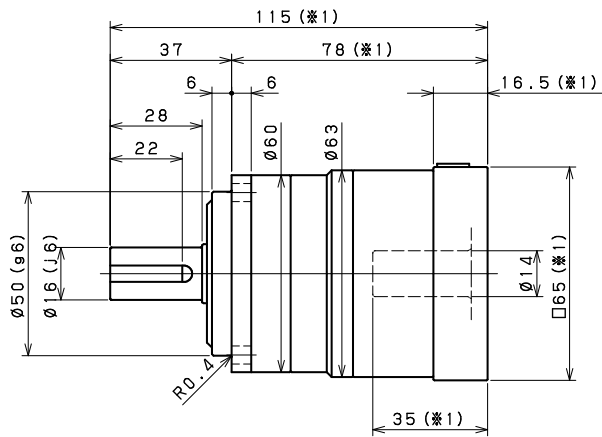
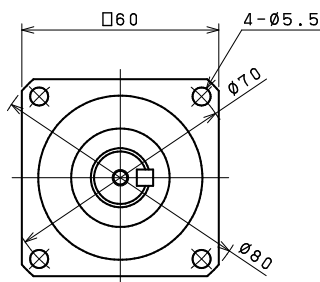


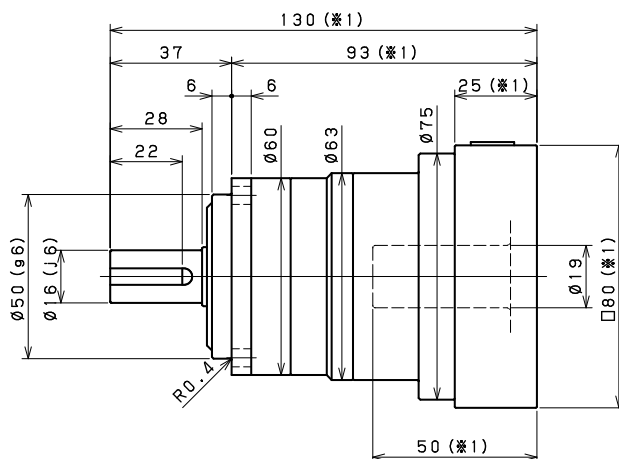
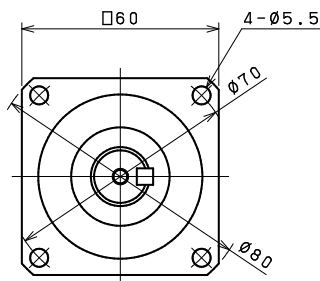
VRB-060 1段 1stage



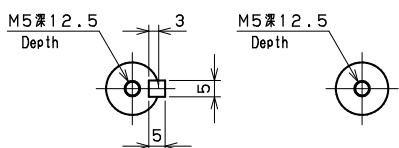
入力軸内径 Input shaft bore $\leq \phi 8$



入力軸内径 Input shaft bore $\leq \phi 14$



入力軸内径 Input shaft bore $\leq \phi 19$



キー付き
Shaft with key

キー無し
Smooth shaft

※1 取付モータにより変化する場合があります

※2 モータ軸径が入力軸径と異なる場合は、ブッシングが挿入されます

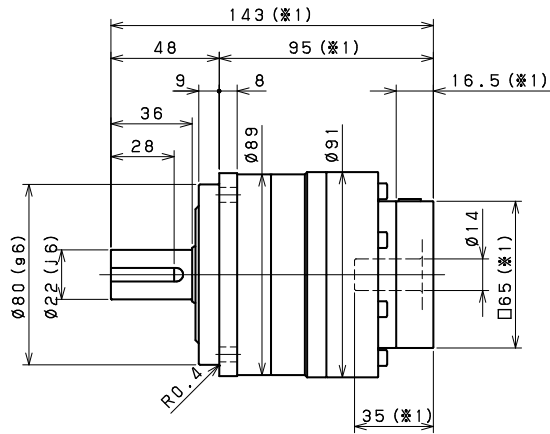
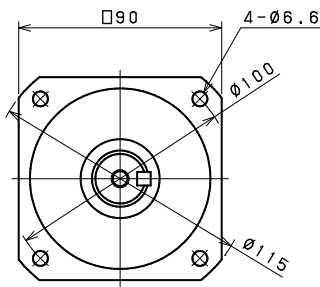
※1 Length will vary depending on motor.

※2 Bushing will be inserted to adapt to motor shaft.

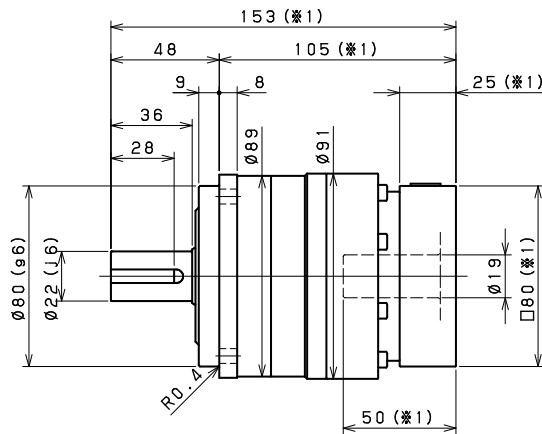
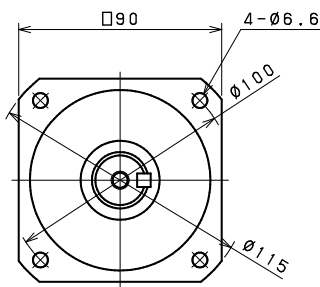
寸法一覧

Dimensions

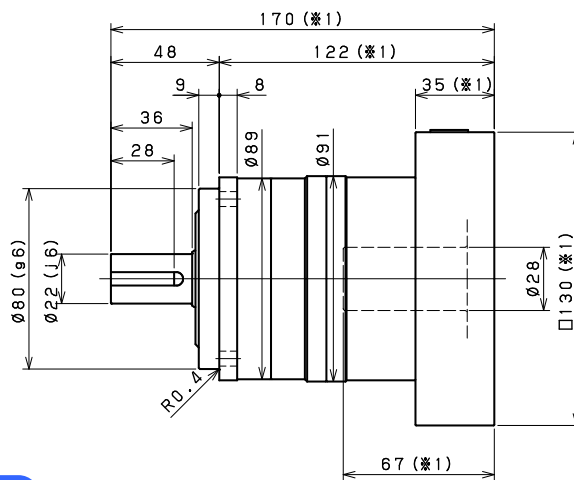
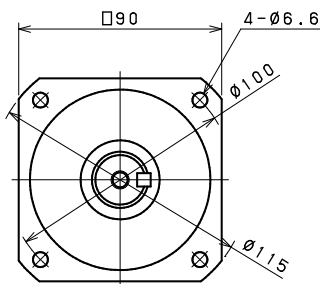
VRB-090 1段 1stage



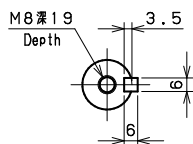
入力軸内径 Input shaft bore $\leq \phi 14$



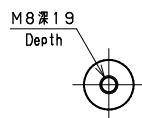
入力軸内径 Input shaft bore $\leq \phi 19$



入力軸内径 Input shaft bore $\leq \phi 28$



キー付き
Shaft with key



キー無し
Smooth shaft

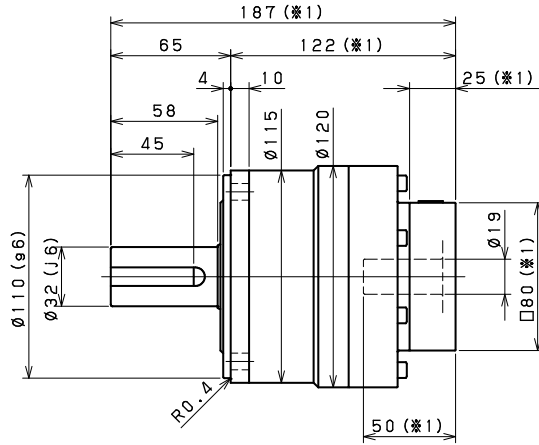
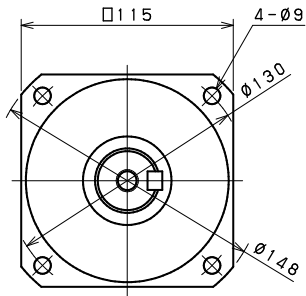
※1 取付モータにより変化する場合があります

※2 モータ軸径が入力軸径と異なる場合は、ブッシングが挿入されます

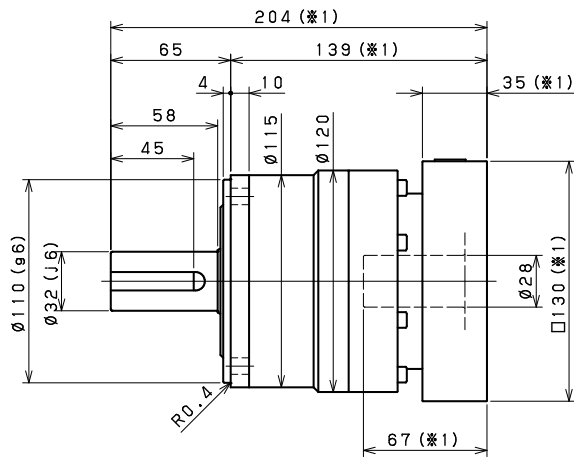
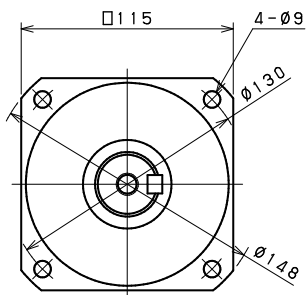
※1 Length will vary depending on motor.

※2 Bushing will be inserted to adapt to motor shaft.

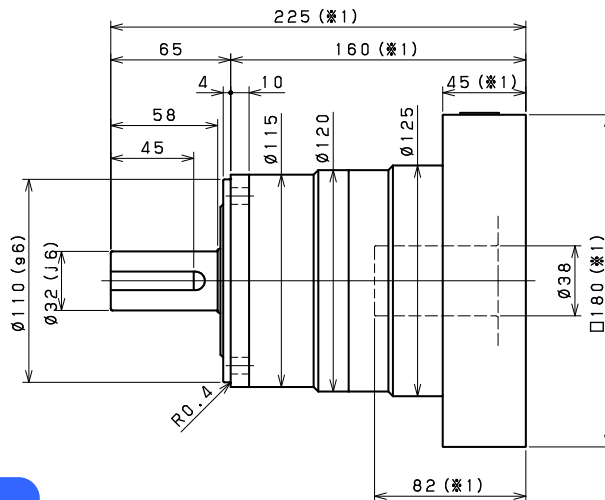
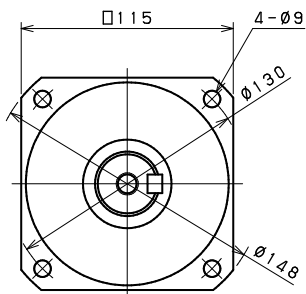
VRB-115 1段 1stage



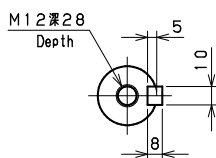
入力軸内径 Input shaft bore $\leq \phi 19$



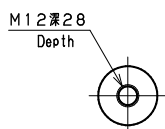
入力軸内径 Input shaft bore $\leq \phi 28$



入力軸内径 Input shaft bore $\leq \phi 38$



キー付き
Shaft with key



キー無し
Smooth shaft

※1 取付モータにより変化する場合があります

※2 モータ軸径が入力軸径と異なる場合は、ブッシングが挿入されます

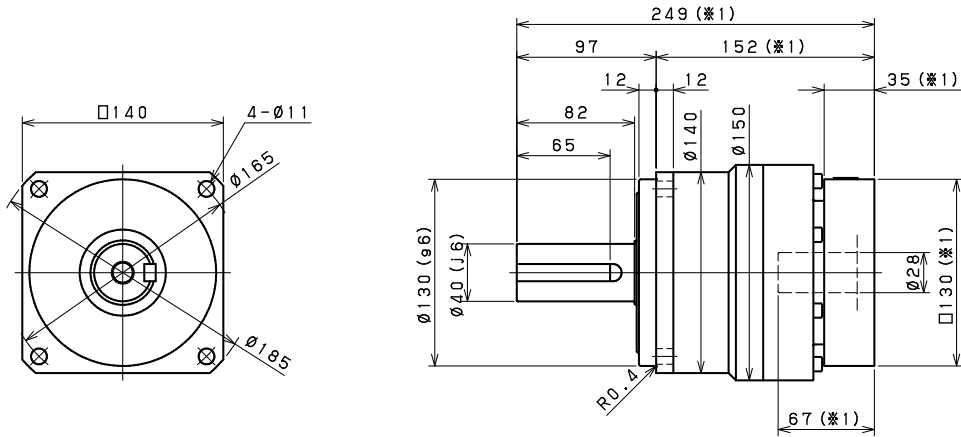
※1 Length will vary depending on motor.

※2 Bushing will be inserted to adapt to motor shaft.

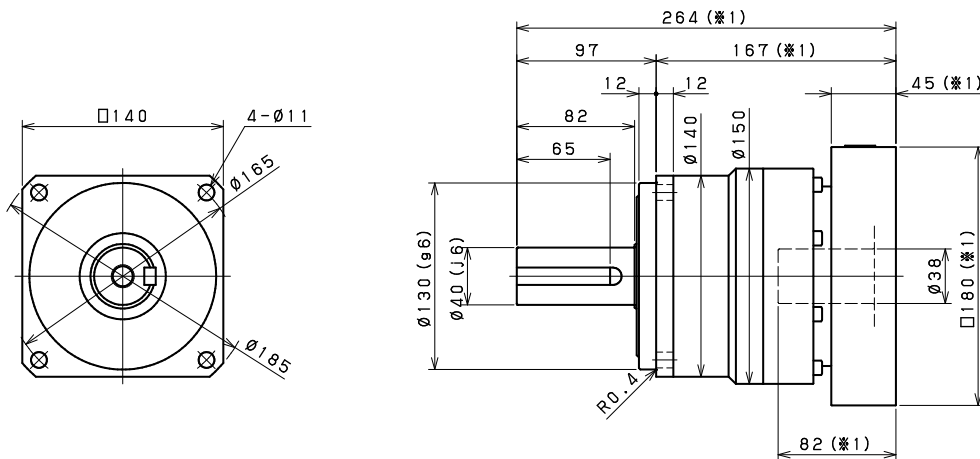
寸法一覧

Dimensions

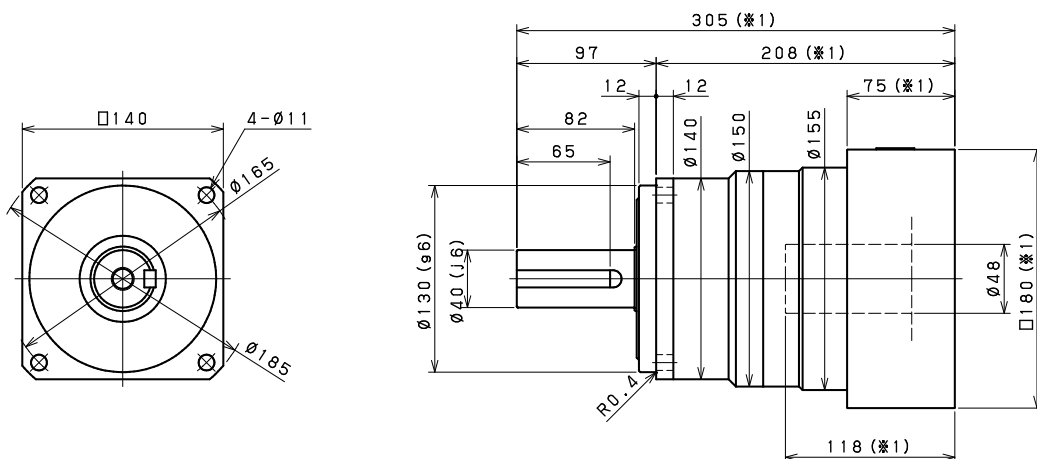
VRB-140 1段 1stage



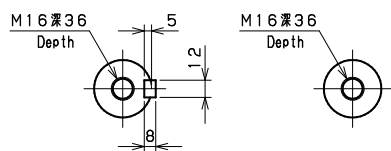
入力軸内径 Input shaft bore $\leq \phi 28$



入力軸内径 Input shaft bore $\leq \phi 38$



入力軸内径 Input shaft bore $\leq \phi 48$



キー付き
Shaft with key

キー無し
Smooth shaft

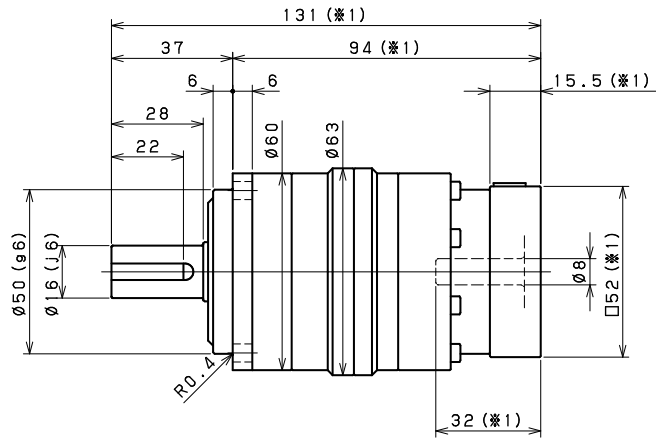
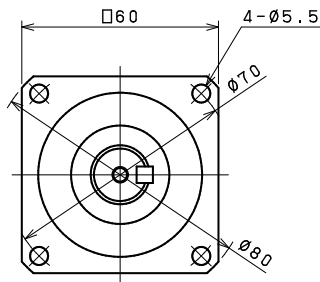
※1 取付モータにより変化する場合があります

※2 モータ軸径が入力軸径と異なる場合は、ブッシングが挿入されます

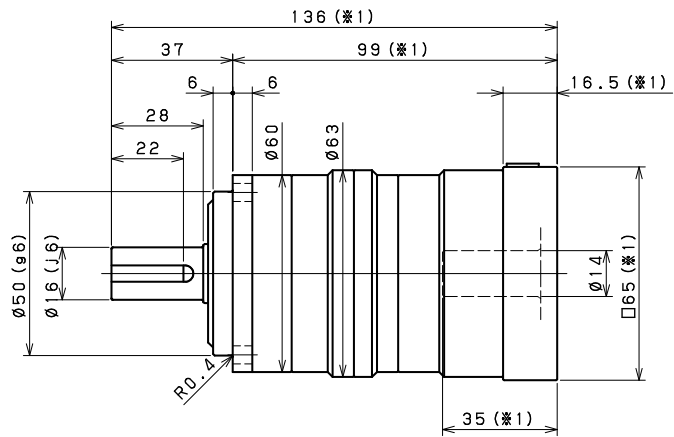
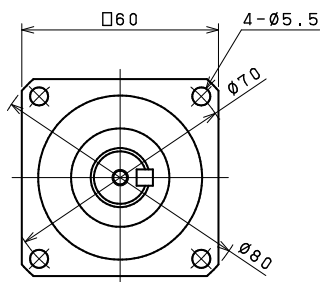
※1 Length will vary depending on motor.

※2 Bushing will be inserted to adapt to motor shaft.

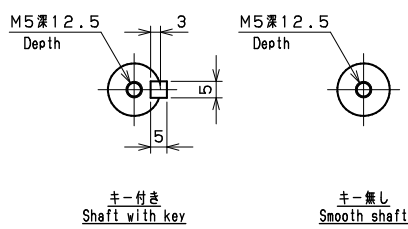
VRB-060 2段 2stage



入力軸内径 Input shaft bore $\leq \phi 8$



入力軸内径 Input shaft bore $\leq \phi 14$



キー付き
Shaft with key

キー無し
Smooth shaft

※1 取付モータにより変化する場合があります

※2 モータ軸径が入力軸径と異なる場合は、
ブッシングが挿入されます

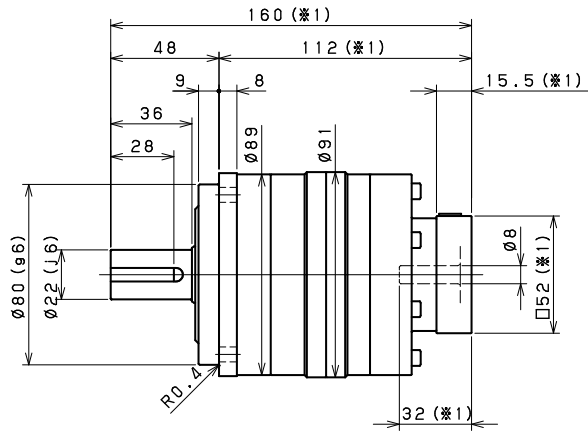
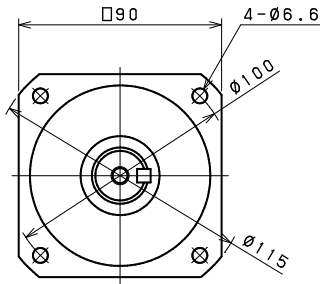
※1 Length will vary depending on motor.

※2 Bushing will be inserted to adapt to motor shaft.

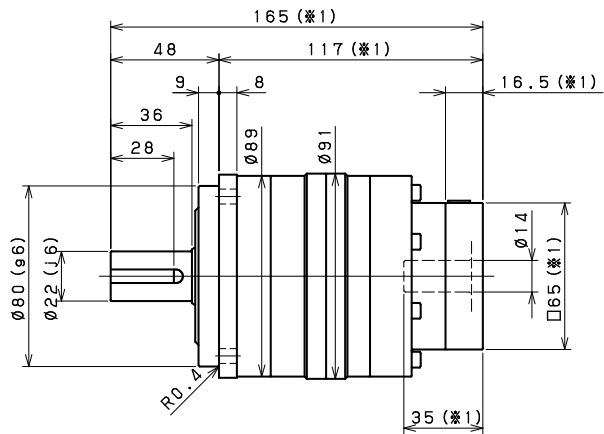
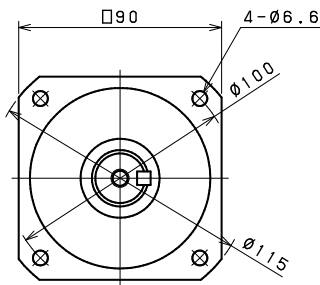
寸法一覧

Dimensions

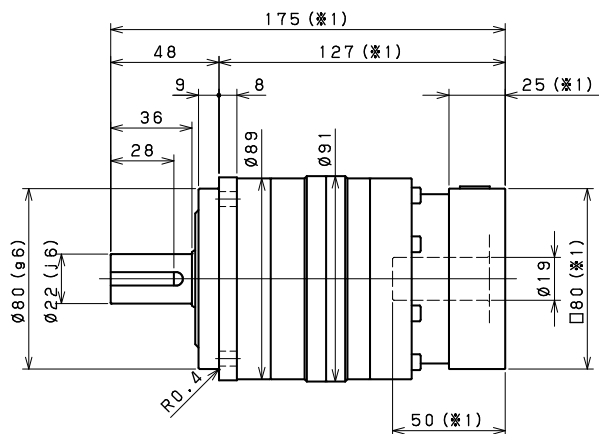
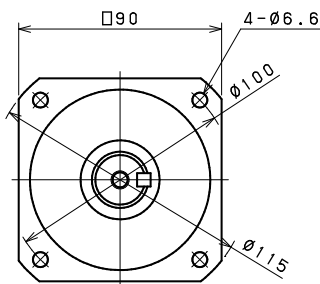
VRB-090 2段 2stage



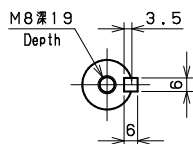
入力軸内径 Input shaft bore $\leq \phi 8$



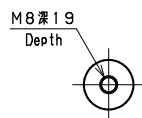
入力軸内径 Input shaft bore $\leq \phi 14$



入力軸内径 Input shaft bore $\leq \phi 19$



キー付き
Shaft with key



キー無し
Smooth shaft

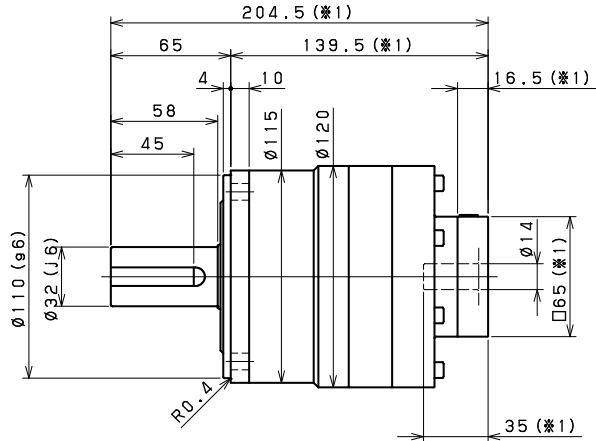
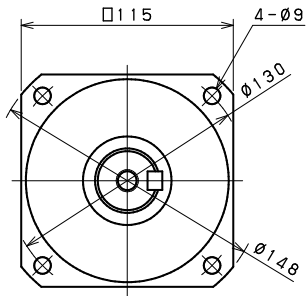
※1 取付モータにより変化する場合があります

※2 モータ軸径が入力軸径と異なる場合は、ブッシングが挿入されます

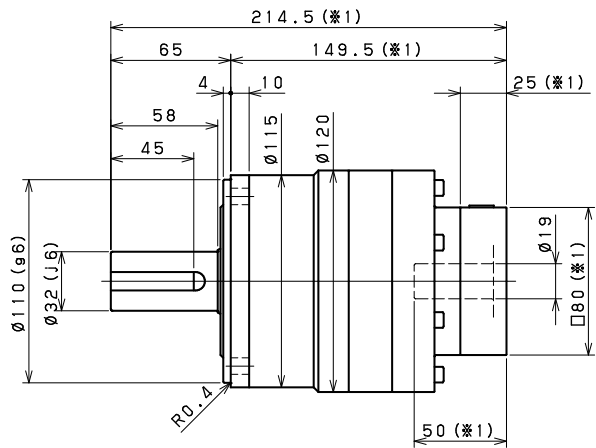
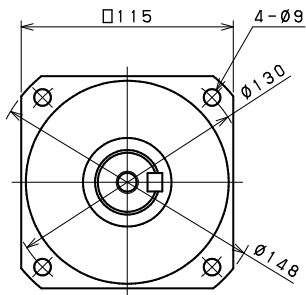
※1 Length will vary depending on motor.

※2 Bushing will be inserted to adapt to motor shaft.

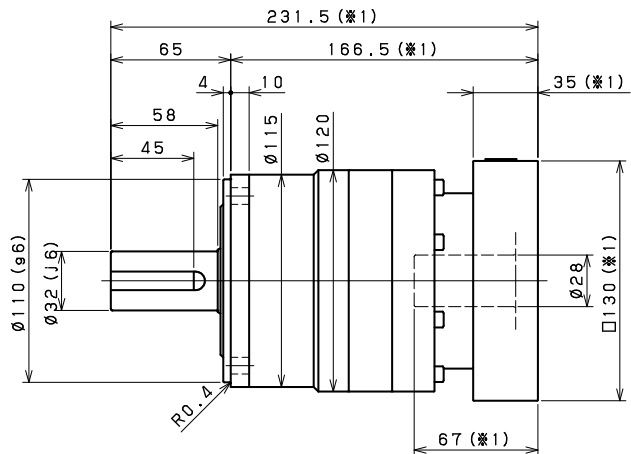
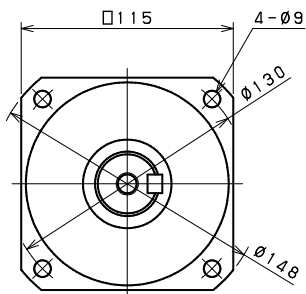
VRB-115 2段 2stage



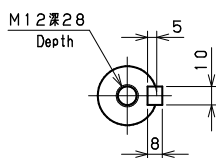
入力軸内径 Input shaft bore $\leq \phi 14$



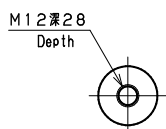
入力軸内径 Input shaft bore $\leq \phi 19$



入力軸内径 Input shaft bore $\leq \phi 28$



キー付き
Shaft with key



キー無し
Smooth shaft

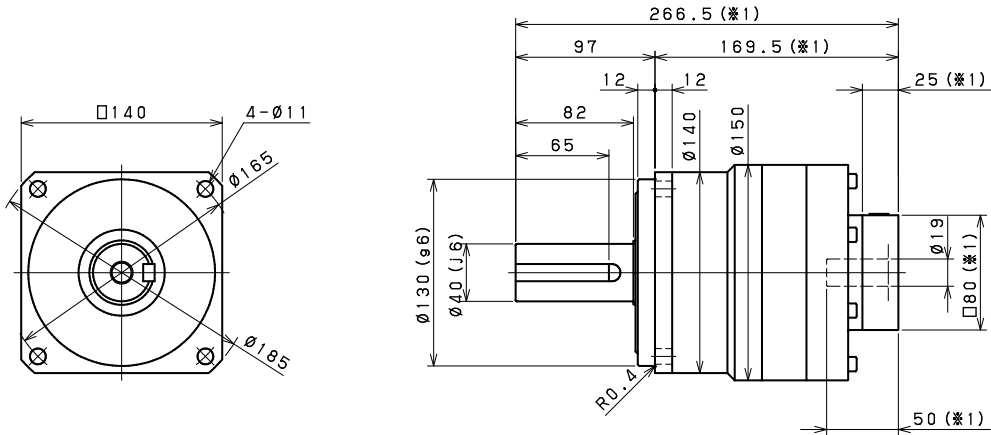
※1 取付モータにより変化する場合があります

※2 モータ軸径が入力軸径と異なる場合は、ブッシングが挿入されます

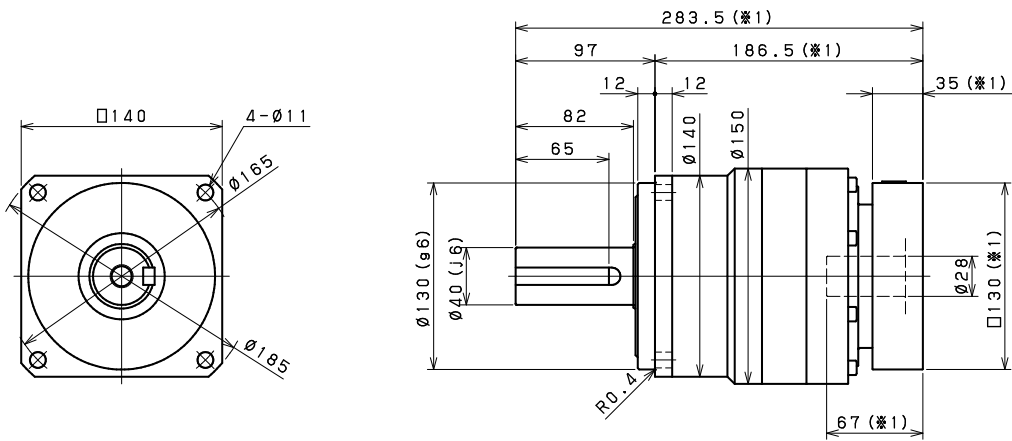
※1 Length will vary depending on motor.

※2 Bushing will be inserted to adapt to motor shaft.

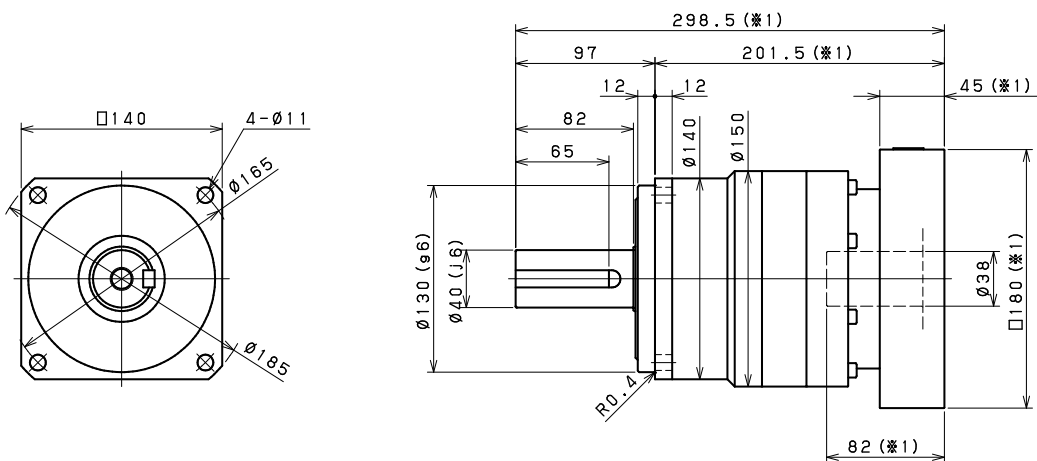
VRB-140 2段 2stage



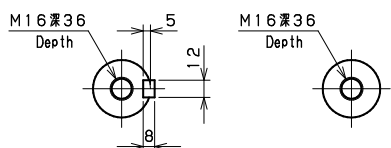
入力軸内径 Input shaft bore $\leq \phi 19$



入力軸内径 Input shaft bore $\leq \phi 28$



入力軸内径 Input shaft bore $\leq \phi 38$



キー付き
Shaft with key

キー無し
Smooth shaft

※1 取付モータにより変化する場合があります

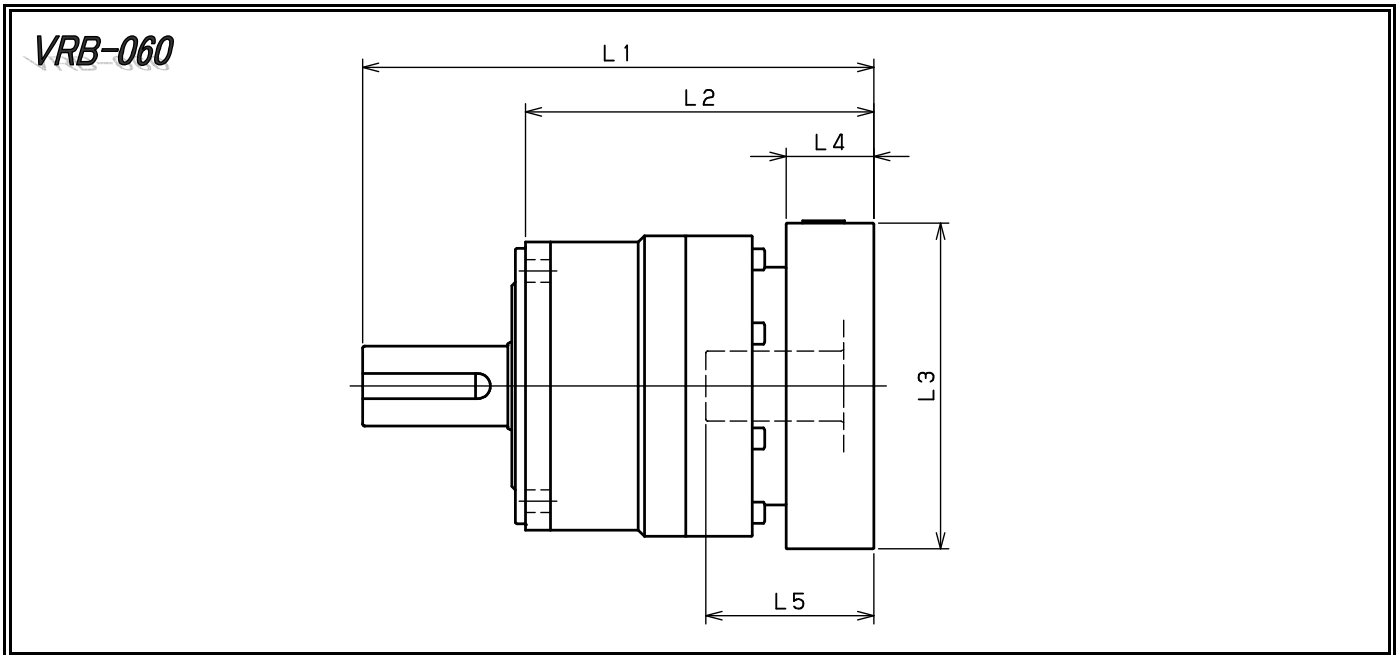
※2 モータ軸径が入力軸径と異なる場合は、ブッシングが挿入されます

※1 Length will vary depending on motor.

※2 Bushing will be inserted to adapt to motor shaft.

寸法一覧 (アダプタ①)

Dimensions (Adapter①)



| 型式 Model number | ** : アダプタ記号 ** : Adapter code | 1段 Single | | | | | 2段 Double | | | | |
|--|----------------------------------|-----------|------|------|------|-----|-----------|------|------|------|----|
| | | L1 | L2 | L3 | L4 | L5 | L1 | L2 | L3 | L4 | L5 |
| VRB-060-□-□-8** (入力軸内径 $\leq \phi 8$) Input shaft bore | AA・AC・AD・AF・AG | 112 | 75 | □52 | 15.5 | 32 | 131 | 94 | □52 | 15.5 | 32 |
| | AB・AE・AH・AJ・AK | 117 | 80 | □52 | 20.5 | 37 | 136 | 99 | □52 | 20.5 | 37 |
| | BA・BB・BD・BE | 112 | 75 | □60 | 15.5 | 32 | 131 | 94 | □60 | 15.5 | 32 |
| | BC・BF | 117 | 80 | □60 | 20.5 | 37 | 136 | 99 | □60 | 20.5 | 37 |
| | CA | 117 | 80 | □70 | 20.5 | 37 | 136 | 99 | □70 | 20.5 | 37 |
| VRB-060-□-□-14** (入力軸内径 $\leq \phi 14$) Input shaft bore | BA・BB・BD・BE・BF・BG・BJ・BK | 115 | 78 | □65 | 16.5 | 35 | 136 | 99 | □65 | 16.5 | 35 |
| | BC・BH | 120 | 83 | □65 | 21.5 | 40 | 141 | 104 | □65 | 21.5 | 40 |
| | BL | 125 | 88 | □65 | 26.5 | 45 | 146 | 109 | □65 | 26.5 | 45 |
| | CA | 115 | 78 | □70 | 16.5 | 35 | 136 | 99 | □70 | 16.5 | 35 |
| | CB | 120 | 83 | □70 | 21.5 | 40 | 141 | 104 | □70 | 21.5 | 40 |
| | DA・DB・DC・DD・DF・DH | 115 | 78 | □80 | 16.5 | 35 | 136 | 99 | □80 | 16.5 | 35 |
| | DE | 120 | 83 | □80 | 21.5 | 40 | 141 | 104 | □80 | 21.5 | 40 |
| | DG | 125 | 88 | □80 | 26.5 | 45 | 146 | 109 | □80 | 26.5 | 45 |
| | EA・EB・EC | 115 | 78 | □90 | 16.5 | 35 | 136 | 99 | □90 | 16.5 | 35 |
| | ED | 125 | 88 | □90 | 26.5 | 45 | 146 | 109 | □90 | 26.5 | 45 |
| | FA | 115 | 78 | □100 | 16.5 | 35 | 136 | 99 | □100 | 16.5 | 35 |
| GA | 115 | 78 | □115 | 16.5 | 35 | 136 | 99 | □115 | 16.5 | 35 | |
| VRB-060-□-□-19** (入力軸内径 $\leq \phi 19$) Input shaft bore | DA・DB・DC | 130 | 93 | □80 | 25 | 50 | | | | | |
| | DD | 140 | 103 | □80 | 35 | 60 | | | | | |
| | DE | 135 | 98 | □80 | 30 | 55 | | | | | |
| | EA | 135 | 98 | □90 | 30 | 55 | | | | | |
| | EB | 130 | 93 | □90 | 25 | 50 | | | | | |
| | EC | 140 | 103 | □90 | 35 | 60 | | | | | |
| | FA | 130 | 93 | □100 | 25 | 50 | | | | | |
| | FB | 140 | 103 | □100 | 35 | 60 | | | | | |
| | GA・GC | 135 | 98 | □115 | 30 | 55 | | | | | |
| | GB・GD | 130 | 93 | □115 | 25 | 50 | | | | | |
| | HA | 130 | 93 | □130 | 25 | 50 | | | | | |
| HB | 145 | 108 | □130 | 40 | 65 | | | | | | |
| HC・HD・HE | 135 | 98 | □130 | 30 | 55 | | | | | | |

※1 1段減速 : 1/3~1/10, 2段減速 : 1/15~1/100

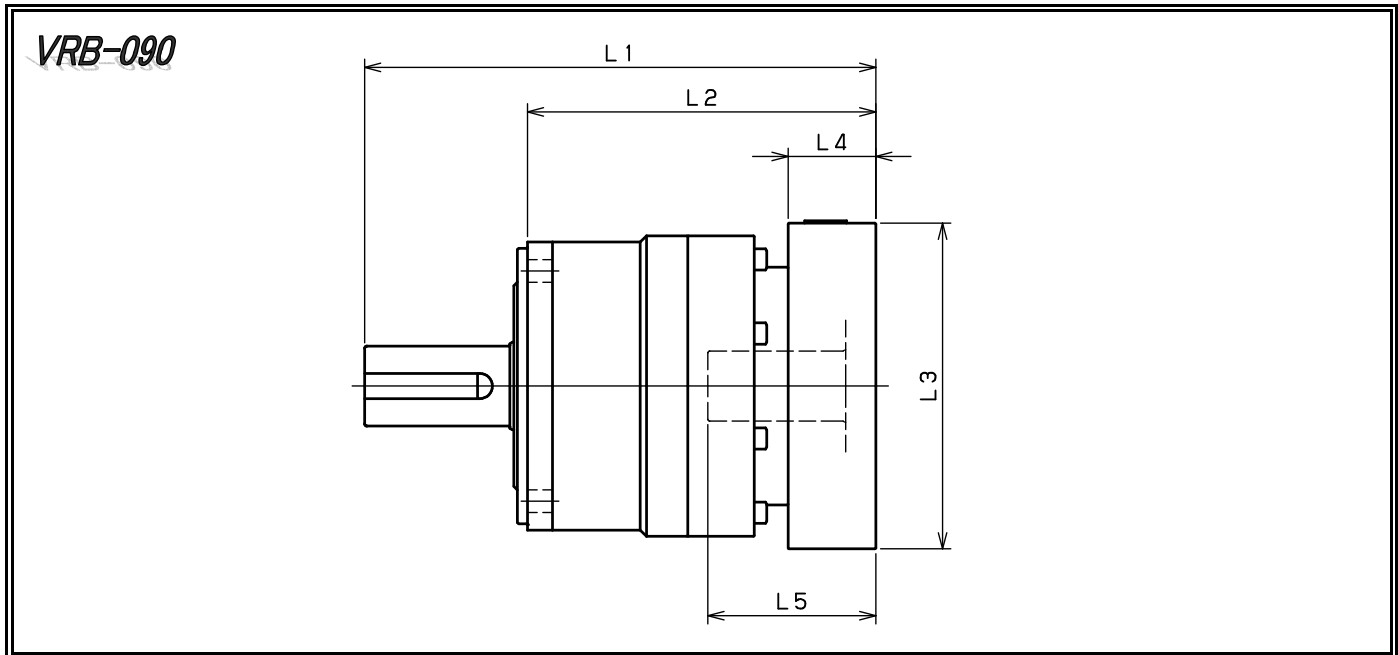
※2 モータ軸径が入力軸径と異なる場合は、ブッシングが挿入されます

※1 Single reduction : 1/3~1/10, Double reduction : 1/15~1/100

※2 Bushing will be inserted to adapt to motor shaft.

寸法一覧 (アダプタ①)

Dimensions (Adapter①)



| 型式 Model number | ** : アダプタ記号 ** : Adapter code | 1段 Single | | | | | 2段 Double | | | | |
|--|----------------------------------|-----------|------|------|------|-----|-----------|------|------|------|----|
| | | L1 | L2 | L3 | L4 | L5 | L1 | L2 | L3 | L4 | L5 |
| VRB-090-□-□-8** (入力軸内径 $\leq \phi 8$) Input shaft bore | AA・AC・AD・AF・AG | / | / | / | / | / | 160 | 112 | □52 | 15.5 | 32 |
| | AB・AE・AH・AJ・AK | / | / | / | / | / | 165 | 117 | □52 | 20.5 | 37 |
| | BA・BB・BD・BE | / | / | / | / | / | 160 | 112 | □60 | 15.5 | 32 |
| | BC・BF | / | / | / | / | / | 165 | 117 | □60 | 20.5 | 37 |
| | CA | / | / | / | / | / | 165 | 117 | □70 | 20.5 | 37 |
| VRB-090-□-□-14** (入力軸内径 $\leq \phi 14$) Input shaft bore | BA・BB・BD・BE・BF・BG・BJ・BK | 143 | 95 | □65 | 16.5 | 35 | 165 | 117 | □65 | 16.5 | 35 |
| | BC・BH | 148 | 100 | □65 | 21.5 | 40 | 170 | 122 | □65 | 21.5 | 40 |
| | BL | 153 | 105 | □65 | 26.5 | 45 | 175 | 127 | □65 | 26.5 | 45 |
| | CA | 143 | 95 | □70 | 16.5 | 35 | 165 | 117 | □70 | 16.5 | 35 |
| | CB | 148 | 100 | □70 | 21.5 | 40 | 170 | 122 | □70 | 21.5 | 40 |
| | DA・DB・DC・DD・DF・DH | 143 | 95 | □80 | 16.5 | 35 | 165 | 117 | □80 | 16.5 | 35 |
| | DE | 148 | 100 | □80 | 21.5 | 40 | 170 | 122 | □80 | 21.5 | 40 |
| | DG | 153 | 105 | □80 | 26.5 | 45 | 175 | 127 | □80 | 26.5 | 45 |
| | EA・EB・EC | 143 | 95 | □90 | 16.5 | 35 | 165 | 117 | □90 | 16.5 | 35 |
| | ED | 153 | 105 | □90 | 26.5 | 45 | 175 | 127 | □90 | 26.5 | 45 |
| | FA | 143 | 95 | □100 | 16.5 | 35 | 165 | 117 | □100 | 16.5 | 35 |
| GA | 143 | 95 | □115 | 16.5 | 35 | 165 | 117 | □115 | 16.5 | 35 | |
| VRB-090-□-□-19** (入力軸内径 $\leq \phi 19$) Input shaft bore | DA・DB・DC | 153 | 105 | □80 | 25 | 50 | 175 | 127 | □80 | 25 | 50 |
| | DD | 163 | 115 | □80 | 35 | 60 | 185 | 137 | □80 | 35 | 60 |
| | DE | 158 | 110 | □80 | 30 | 55 | 180 | 132 | □80 | 30 | 55 |
| | EA | 158 | 110 | □90 | 30 | 55 | 180 | 132 | □90 | 30 | 55 |
| | EB | 153 | 105 | □90 | 25 | 50 | 175 | 127 | □90 | 25 | 50 |
| | EC | 163 | 115 | □90 | 35 | 60 | 185 | 137 | □90 | 35 | 60 |
| | FA | 153 | 105 | □100 | 25 | 50 | 175 | 127 | □100 | 25 | 50 |
| | FB | 163 | 115 | □100 | 35 | 60 | 185 | 137 | □100 | 35 | 60 |
| | GA・GC | 158 | 110 | □115 | 30 | 55 | 180 | 132 | □115 | 30 | 55 |
| | GB・GD | 153 | 105 | □115 | 25 | 50 | 175 | 127 | □115 | 25 | 50 |
| | HA | 153 | 105 | □130 | 25 | 50 | 175 | 127 | □130 | 25 | 50 |
| | HB | 168 | 120 | □130 | 40 | 65 | 190 | 142 | □130 | 40 | 65 |
| | HC・HD・HE | 158 | 110 | □130 | 30 | 55 | 180 | 132 | □130 | 30 | 55 |
| VRB-090-□-□-28** (入力軸内径 $\leq \phi 28$) Input shaft bore | FA・FB・FC | 170 | 122 | □100 | 35 | 67 | / | / | / | / | / |
| | GA・GB・GC・GD・GE・GF・GG | 170 | 122 | □115 | 35 | 67 | / | / | / | / | / |
| | HA・HC・HD | 170 | 122 | □130 | 35 | 67 | / | / | / | / | / |
| | HB | 180 | 132 | □130 | 45 | 77 | / | / | / | / | / |
| | JA・JB・JC | 170 | 122 | □150 | 35 | 67 | / | / | / | / | / |
| | KA・KB | 170 | 122 | □180 | 35 | 67 | / | / | / | / | / |
| | LA | 170 | 122 | □200 | 35 | 67 | / | / | / | / | / |
| MA | 170 | 122 | □220 | 35 | 67 | / | / | / | / | / | |

※1 1段減速 : 1/3~1/10、2段減速 : 1/15~1/100

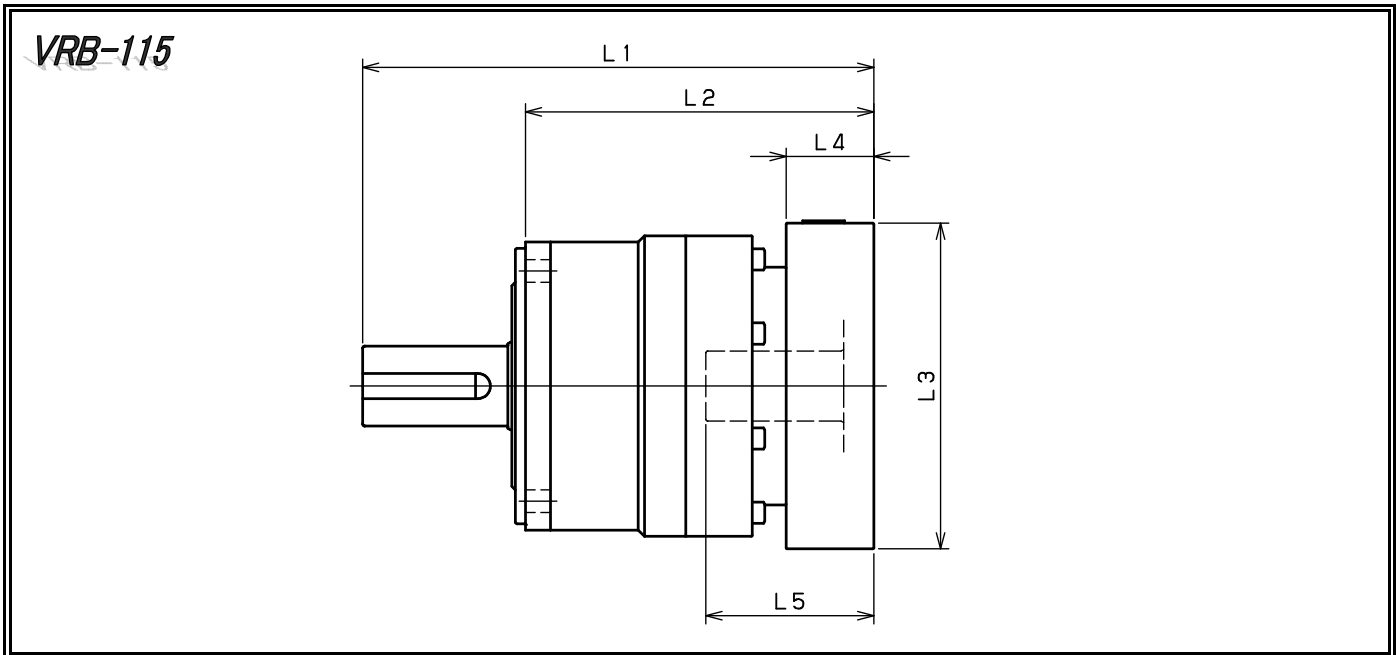
※2 モータ軸径が入力軸径と異なる場合は、ブッシングが挿入されます

※1 Single reduction : 1/3~1/10, Double reduction : 1/15~1/100

※2 Bushing will be inserted to adapt to motor shaft.

寸法一覧 (アダプタ①)

Dimensions (Adapter①)



| 型式 Model number | **: アダプタ記号 **: Adapter code | 1段 Single | | | | | 2段 Double | | | | |
|---|---|-----------|-----|------|-----|----|-----------|-------|-------|------|----|
| | | L1 | L2 | L3 | L4 | L5 | L1 | L2 | L3 | L4 | L5 |
| VRB-115-□-□-14** (入力軸内径 ≤ φ14 Input shaft bore) | BA・BB・BD・BE・BF・BG・BJ・BK | | | | | | 204.5 | 139.5 | □65 | 16.5 | 35 |
| | BC・BH | | | | | | 209.5 | 144.5 | □65 | 21.5 | 40 |
| | BL | | | | | | 214.5 | 149.5 | □65 | 26.5 | 45 |
| | CA | | | | | | 204.5 | 139.5 | □70 | 16.5 | 35 |
| | CB | | | | | | 209.5 | 144.5 | □70 | 21.5 | 40 |
| | DA・DB・DC・DD・DF・DH | | | | | | 204.5 | 139.5 | □80 | 16.5 | 35 |
| | DE | | | | | | 209.5 | 144.5 | □80 | 21.5 | 40 |
| | DG | | | | | | 214.5 | 149.5 | □80 | 26.5 | 45 |
| | EA・EB・EC | | | | | | 204.5 | 139.5 | □90 | 16.5 | 35 |
| | ED | | | | | | 214.5 | 149.5 | □90 | 26.5 | 45 |
| | FA | | | | | | 204.5 | 139.5 | □100 | 16.5 | 35 |
| | GA | | | | | | 204.5 | 139.5 | □115 | 16.5 | 35 |
| | VRB-115-□-□-19** (入力軸内径 ≤ φ19 Input shaft bore) | DA・DB・DC | 187 | 122 | □80 | 25 | 50 | 214.5 | 149.5 | □80 | 25 |
| DD | | 197 | 132 | □80 | 35 | 60 | 224.5 | 159.5 | □80 | 35 | 60 |
| DE | | 192 | 127 | □80 | 30 | 55 | 219.5 | 154.5 | □80 | 30 | 55 |
| EA | | 192 | 127 | □90 | 30 | 55 | 219.5 | 154.5 | □90 | 30 | 55 |
| EB | | 187 | 122 | □90 | 25 | 50 | 214.5 | 149.5 | □90 | 25 | 50 |
| EC | | 197 | 132 | □90 | 35 | 60 | 224.5 | 159.5 | □90 | 35 | 60 |
| FA | | 187 | 122 | □100 | 25 | 50 | 214.5 | 149.5 | □100 | 25 | 50 |
| FB | | 197 | 132 | □100 | 35 | 60 | 224.5 | 159.5 | □100 | 35 | 60 |
| GA・GC | | 192 | 127 | □115 | 30 | 55 | 219.5 | 154.5 | □115 | 30 | 55 |
| GB・GD | | 187 | 122 | □115 | 25 | 50 | 214.5 | 149.5 | □115 | 25 | 50 |
| HA | | 187 | 122 | □130 | 25 | 50 | 214.5 | 149.5 | □130 | 25 | 50 |
| HB | | 202 | 137 | □130 | 40 | 65 | 229.5 | 164.5 | □130 | 40 | 65 |
| HC・HD・HE | | 192 | 127 | □130 | 30 | 55 | 219.5 | 154.5 | □130 | 30 | 55 |
| VRB-115-□-□-28** (入力軸内径 ≤ φ28 Input shaft bore) | FA・FB・FC | 204 | 139 | □100 | 35 | 67 | 231.5 | 166.5 | □100 | 35 | 67 |
| | GA・GB・GC・GD・GE・GF・GG | 204 | 139 | □115 | 35 | 67 | 231.5 | 166.5 | □115 | 35 | 67 |
| | HA・HC・HD | 204 | 139 | □130 | 35 | 67 | 231.5 | 166.5 | □130 | 35 | 67 |
| | HB | 214 | 149 | □130 | 45 | 77 | 241.5 | 176.5 | □130 | 45 | 77 |
| | JA・JB・JC | 204 | 139 | □150 | 35 | 67 | 231.5 | 166.5 | □150 | 35 | 67 |
| | KA・KB | 204 | 139 | □180 | 35 | 67 | 231.5 | 166.5 | □180 | 35 | 67 |
| | LA | 204 | 139 | □200 | 35 | 67 | 231.5 | 166.5 | □200 | 35 | 67 |
| | MA | 204 | 139 | □220 | 35 | 67 | 231.5 | 166.5 | □220 | 35 | 67 |
| VRB-115-□-□-38** (入力軸内径 ≤ φ38 Input shaft bore) | HA | 225 | 160 | □130 | 45 | 82 | | | | | |
| | HB | 220 | 155 | □130 | 40 | 77 | | | | | |
| | JA | 225 | 160 | □150 | 45 | 82 | | | | | |
| | KA・KB・KC | 225 | 160 | □180 | 45 | 82 | | | | | |
| | LA | 225 | 160 | □200 | 45 | 82 | | | | | |
| | LB | 235 | 170 | □200 | 55 | 92 | | | | | |
| | MA・MB | 225 | 160 | □220 | 45 | 82 | | | | | |
| | NA | 225 | 160 | □250 | 45 | 82 | | | | | |

※1 1段減速 : 1/3~1/10, 2段減速 : 1/15~1/100

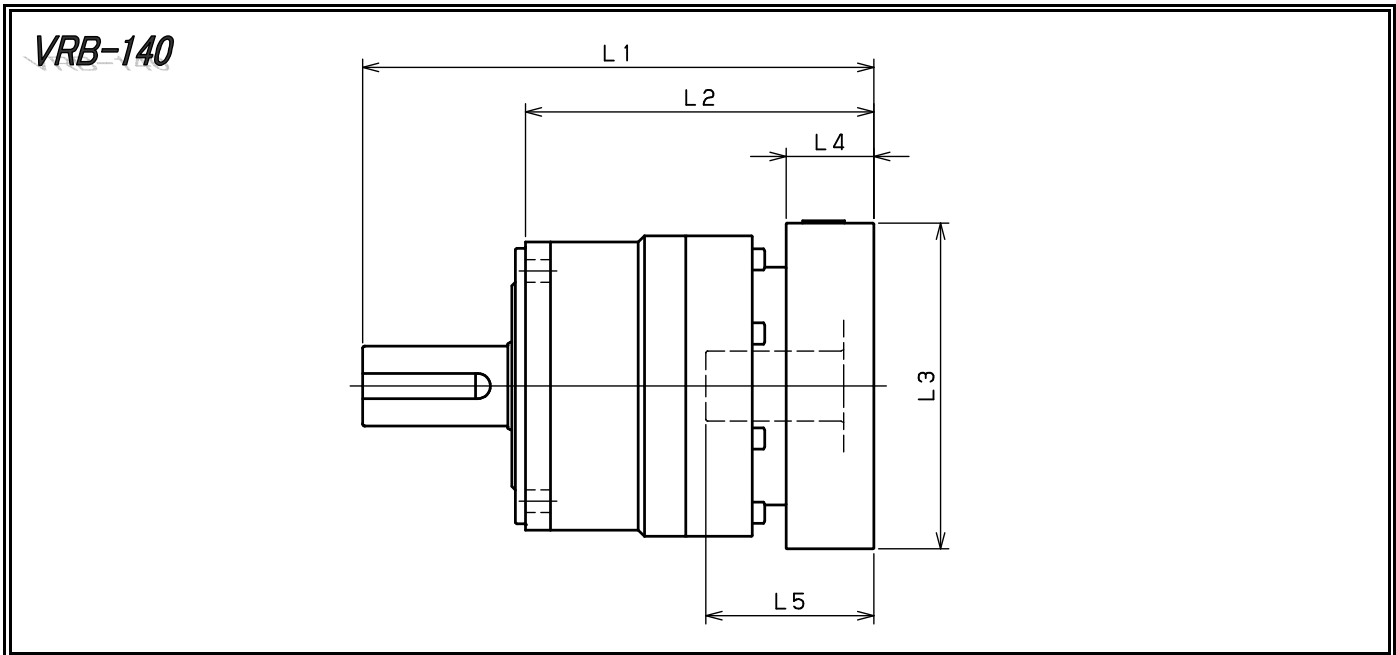
※2 モータ軸径が入力軸径と異なる場合は、ブッシングが挿入されます

※1 Single reduction : 1/3~1/10, Double reduction : 1/15~1/100

※2 Bushing will be inserted to adapt to motor shaft.

寸法一覧 (アダプタ①)

Dimensions (Adapter①)



| 型式 Model number | **: アダプタ記号 **: Adapter code | 1段 Single | | | | | 2段 Double | | | | |
|---|--------------------------------|-----------|------|------|-----|-----|-----------|-------|------|----|----|
| | | L1 | L2 | L3 | L4 | L5 | L1 | L2 | L3 | L4 | L5 |
| VRB-140-□-□-19** 〔 入力軸内径 ≤ φ19 Input shaft bore 〕 | DA・DB・DC | | | | | | 266.5 | 169.5 | □80 | 25 | 50 |
| | DD | | | | | | 276.5 | 179.5 | □80 | 35 | 60 |
| | DE | | | | | | 271.5 | 174.5 | □80 | 30 | 55 |
| | EA | | | | | | 271.5 | 174.5 | □90 | 30 | 55 |
| | EB | | | | | | 266.5 | 169.5 | □90 | 25 | 50 |
| | EC | | | | | | 276.5 | 179.5 | □90 | 35 | 60 |
| | FA | | | | | | 266.5 | 169.5 | □100 | 25 | 50 |
| | FB | | | | | | 276.5 | 179.5 | □100 | 35 | 60 |
| | GA・GC | | | | | | 271.5 | 174.5 | □115 | 30 | 55 |
| | GB・GD | | | | | | 266.5 | 169.5 | □115 | 25 | 50 |
| | HA | | | | | | 266.5 | 169.5 | □130 | 25 | 50 |
| | HB | | | | | | 281.5 | 184.5 | □130 | 40 | 65 |
| | HC・HD・HE | | | | | | 271.5 | 174.5 | □130 | 30 | 55 |
| VRB-140-□-□-28** 〔 入力軸内径 ≤ φ28 Input shaft bore 〕 | FA・FB・FC | 249 | 152 | □100 | 35 | 67 | 283.5 | 186.5 | □100 | 35 | 67 |
| | GA・GB・GC・GD・GE・GF・GG | 249 | 152 | □115 | 35 | 67 | 283.5 | 186.5 | □115 | 35 | 67 |
| | HA・HC・HD | 249 | 152 | □130 | 35 | 67 | 283.5 | 186.5 | □130 | 35 | 67 |
| | HB | 259 | 162 | □130 | 45 | 77 | 293.5 | 196.5 | □130 | 45 | 77 |
| | JA・JB・JC | 249 | 152 | □150 | 35 | 67 | 283.5 | 186.5 | □150 | 35 | 67 |
| | KA・KB | 249 | 152 | □180 | 35 | 67 | 283.5 | 186.5 | □180 | 35 | 67 |
| | LA | 249 | 152 | □200 | 35 | 67 | 283.5 | 186.5 | □200 | 35 | 67 |
| VRB-140-□-□-38** 〔 入力軸内径 ≤ φ38 Input shaft bore 〕 | MA | 249 | 152 | □220 | 35 | 67 | 283.5 | 186.5 | □220 | 35 | 67 |
| | HA | 264 | 167 | □130 | 45 | 82 | 298.5 | 201.5 | □130 | 45 | 82 |
| | HB | 259 | 162 | □130 | 40 | 77 | 293.5 | 196.5 | □130 | 40 | 77 |
| | JA | 264 | 167 | □150 | 45 | 82 | 298.5 | 201.5 | □150 | 45 | 82 |
| | KA・KB・KC | 264 | 167 | □180 | 45 | 82 | 298.5 | 201.5 | □180 | 45 | 82 |
| | LA | 264 | 167 | □200 | 45 | 82 | 298.5 | 201.5 | □200 | 45 | 82 |
| | LB | 274 | 177 | □200 | 55 | 92 | 308.5 | 211.5 | □200 | 55 | 92 |
| VRB-140-□-□-48** 〔 入力軸内径 ≤ φ48 Input shaft bore 〕 | MA・MB | 264 | 167 | □220 | 45 | 82 | 298.5 | 201.5 | □220 | 45 | 82 |
| | NA | 264 | 167 | □250 | 45 | 82 | 298.5 | 201.5 | □250 | 45 | 82 |
| | KB・KC | 285 | 188 | □180 | 55 | 98 | | | | | |
| | KA | 305 | 208 | □180 | 75 | 118 | | | | | |
| | LA | 285 | 188 | □200 | 55 | 98 | | | | | |
| | MA | 285 | 188 | □220 | 55 | 98 | | | | | |
| | MB | 305 | 208 | □220 | 75 | 118 | | | | | |
| NA | 305 | 208 | □250 | 75 | 118 | | | | | | |
| PA | 305 | 208 | □280 | 75 | 118 | | | | | | |

※1 1段減速 : 1/3~1/10, 2段減速 : 1/15~1/100

※1 Single reduction : 1/3~1/10, Double reduction : 1/15~1/100

※2 モータ軸径が入力軸径と異なる場合は、ブッシングが挿入されます

※2 Bushing will be inserted to adapt to motor shaft.